

TRANSDERM 1.2 K

High-powered Transdermic Transfer

With Impedance and Control detector



Automatic Delivery of Energy
(Entrega de energía automática)



TRANSDERM

Cutting-edge technology
Professional unit

- FACIAL AND BODY DEVICE
- BIPHASIC PULSED
- WITH FINGER CLIP "ID" SYSTEM FOR AUTOMATIC DELIVERY OF ENERGY
- HIGH VOLTAGE AND LOW INTENSITY

- TOUCH SCREEN DISPLAY
- RUNNING-TIME COUNTER
- SMT TECHNOLOGY
- METAL CABINET

THE MARKET'S STATE OF THE ART DEVICE

In an unstoppable search to satisfy the most demanding professional needs NOTO® developed TRANSDERM, combining technology and design for **non-invasive** treatments. A unique device not only for its design and touch screen display, but also for its automatic delivery of energy, created for safer and faster applications.

"ID" SYTEM (IMPEDANCE DETECTOR)

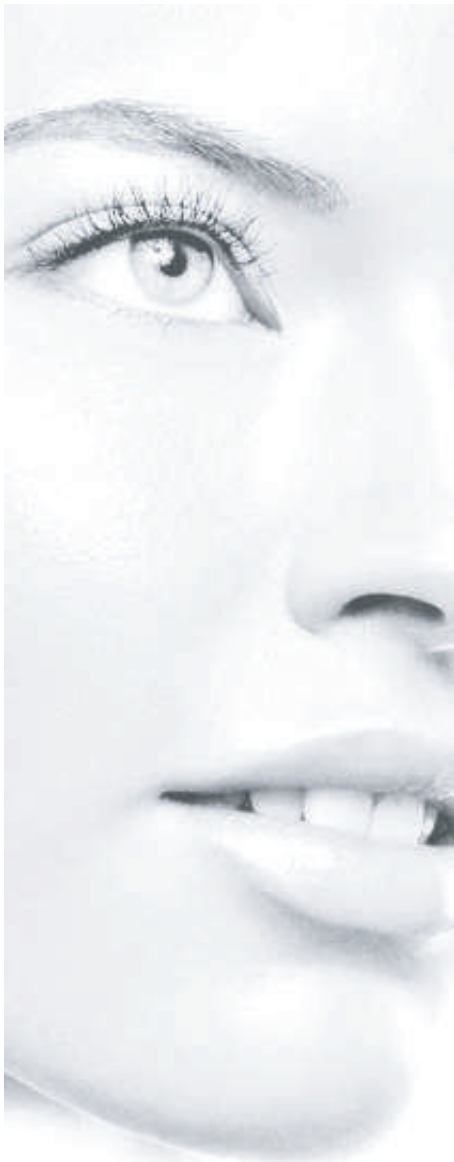
ID smart system reveals to the professional, with a luminous sensor, the accurate patient-electrode link and the correct emission of the selected current - developed by NOTO®.

MICROELECTRONICS TECHNOLOGY

Its technology, like all developed by NOTO®, is based on SMT microelectronics. These components grant the device excellent usage, stability, and reliability features besides its quality and safety standards.

WELCOME TO TECHNOLOGY. WELCOME TO NOTO!

NOTO
TECNOLOGIA PARA CONFIAR



With the launch of TRANSDERM®, NOTO® proposes a different course for aesthetics. A new scenario where therapies combination, cutting-edge technology, and quality products and supplies are fundamental for visible, effective, and durable results.

ELECTROPORATION

Use in AESTHETIC MEDICINE (*)

- Anti-aging
- Cellulite
- Wrinkles
- Stretch Marks
- Flaccidity
- Localized Adiposity
- Poor Plasma

Use in MEDICINE (*)

- Pain treatments
- Topical Anesthetic
- Muscle Cramps
- High molecular weight active ingredients

(*) Among other treatments

TECHNICAL DATA TRANSDERM:

MANUFACTURED BY:	NOTO GROUP S.A.
COUNTRY:	ARGENTINA
NAME OF THE PRODUCT:	TRANSDERM
WIDE:	280 MM
LENGTH:	210 MM
HEIGHT:	110 MM
WEIGHT:	2,1 KG
POWER SUPPLY VOLTAGE:	98 A 240 V~ 50/60HZ
POWER:	60 VA
PROGRAMMING:	MICROCONTROLLER
DISPLAY:	128X64 GRAPHIC TOUCH
SOURCE:	INTERNAL SWITCHING
TECHNOLOGY:	SMT
TIME CONTROL:	MANUAL

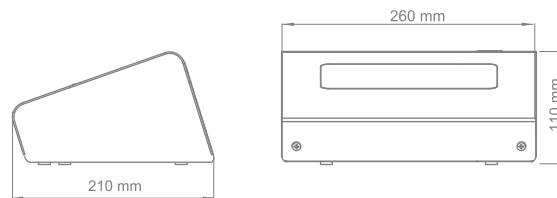
NOTE: DEVICE SPECIFICATIONS MAY CHANGE WITHOUT PREVIOUS NOTICE

ELECTROPORATION SET:

1 ALUMINUM ACETAL RESIN APPLICATOR.
1 SURGICAL STAINLESS STEEL HEADER OF 32 MM DIAMETER.
1 SURGICAL STAINLESS STEEL HEADER OF 15 MM DIAMETER.

ELECTROPORATION:

BIPHASIC WAVE FORM:	PROPRIETARY
FREQUENCY:	2,1 KHZ
OUTPUT VOLTAGE :	1200 VPP WITH 47 K CHARGE
OUTPUT SYSTEM:	BIPHASIC
APPLICATOR HEADER:	SURGICAL STAINLESS STEEL
FACE:	15 MM
BODY:	32 MM
APPLICATOR MATERIAL:	ALUMINUM AND ACETAL RESIN INJECTED
CABLE:	WITH WIDE CONNECTOR OUTPUT



NOTO supports all clients with a set of tools constantly available.

Tools as training, post-sale service support, and assured spare parts. All these instruments with the objective of making NOTO®'s products your best choice.

MORE EQUIPMENTS BY NOTO:

CAV 47- VARIABLE FREQUENCY CAVITATION.

TRIMAX - TRIPOLAR RESISTIVE RADIOFREQUENCY WITH TEMPERATURE SENSOR AND CONTROL.